

Bench Test Report: Cell Culture Dish

Cell Culture

293A – Human Embryonic Kidney Epithelial

BHK-21 – Hamster Kidney Fibroblast

C2C12 – Mouse Muscle Myoblast

HaCaT – Human Keratinocyte

HeLa – Human Cervix Adenocarcinoma

L6 – Rat Skeletal Muscle Myoblast

LNCaP – Human Prostate Carcinoma

SKNMC – Human Neuroepithelioma

T98G – Human Glioblastoma

U2-OS – Human Osteosarcoma

Human Embryonic Cells

www.spllifesciences.com

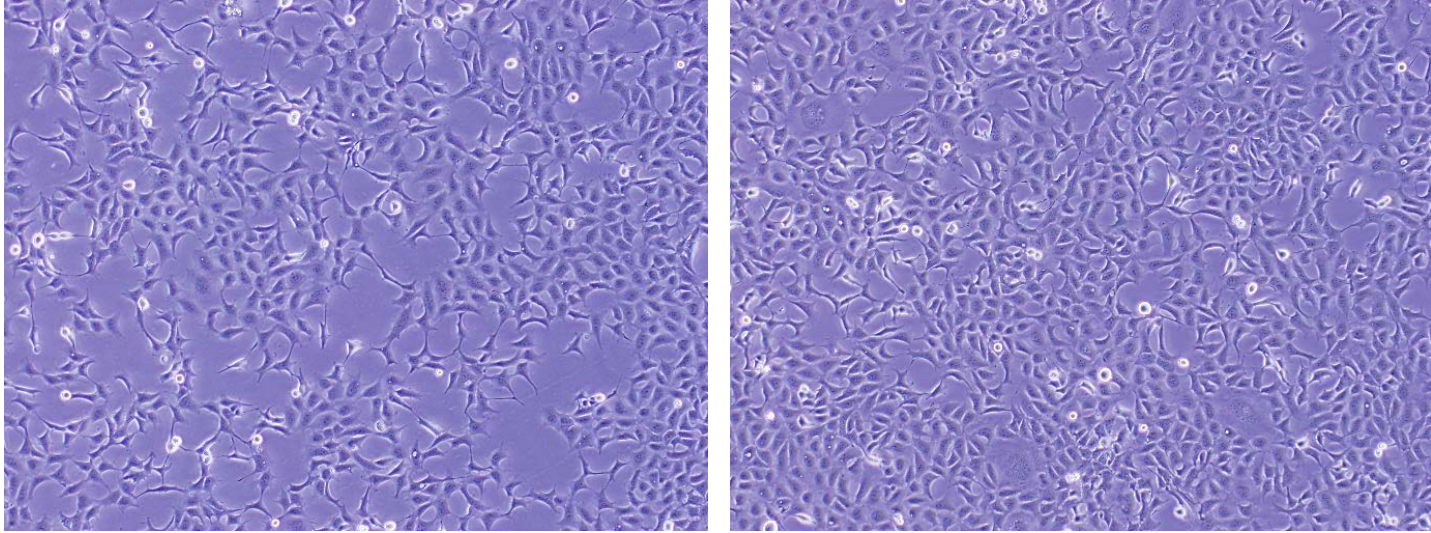
For technical assistance, contact SPL R&D Center at:

Tel: +82-31-533-4800; Fax: +82-31-533-1430; e-mail: spl@ispl.co.kr

To place an order, contact your local distributor or

Tel: +82-31-533-4800; Fax: +82-31-533-1430; e-mail: business@ispl.co.kr

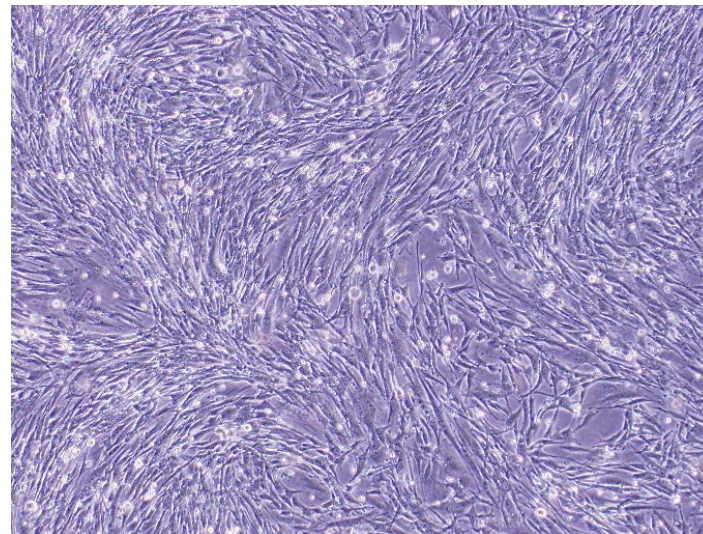
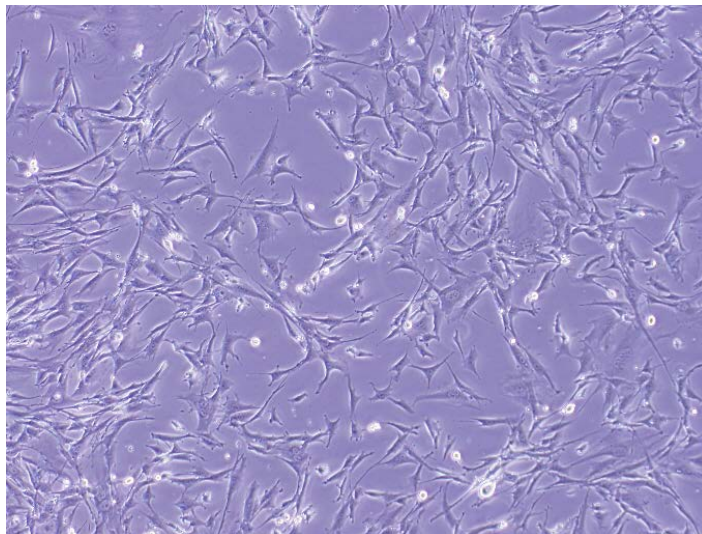
SPL Cell Culture Dish – 293A



- Human kidney epithelial (293A) cells cultured on SPL Cell Culture Dishes (20100).
- Cells were maintained for 3 days (seeding density: 3×10^5 cells/dish) in 37°C humidified condition, in 10 ml of DMEM, supplemented with 10% FBS and 1% antibiotics.
- Cells were tested negative for bacteria and fungi.

For Research Use Only. Not intended for use in diagnostic or therapeutic procedures.
© SPL Life Sciences Co., Ltd.

SPL Cell Culture Dish – BHK-21



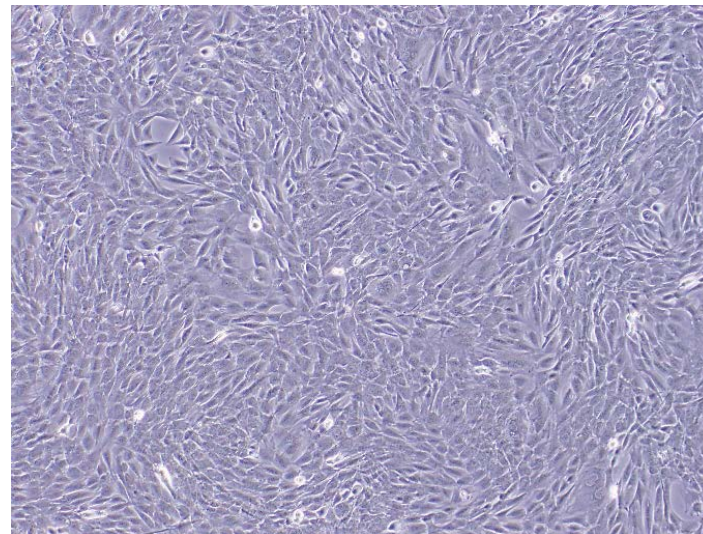
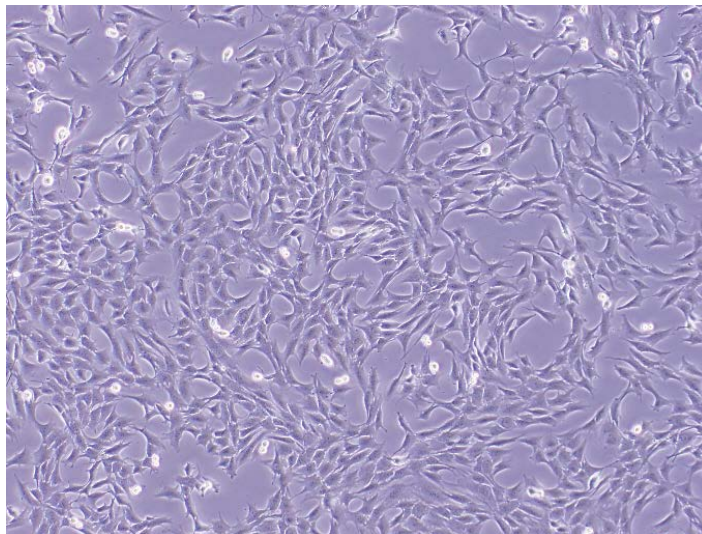
- Hamster kidney fibroblast (BHK-21) cells cultured on SPL Cell Culture Dishes (20100).
- Cells were maintained for 3 days (seeding density: 2×10^5 cells/dish) in 37°C humidified condition, in 10 ml of DMEM, supplemented with 10% FBS and 1% antibiotics.
- Cells were tested negative for bacteria and fungi.

For Research Use Only. Not intended for use in diagnostic or therapeutic procedures.

© SPL Life Sciences Co., Ltd.



SPL Cell Culture Dish – C2C12



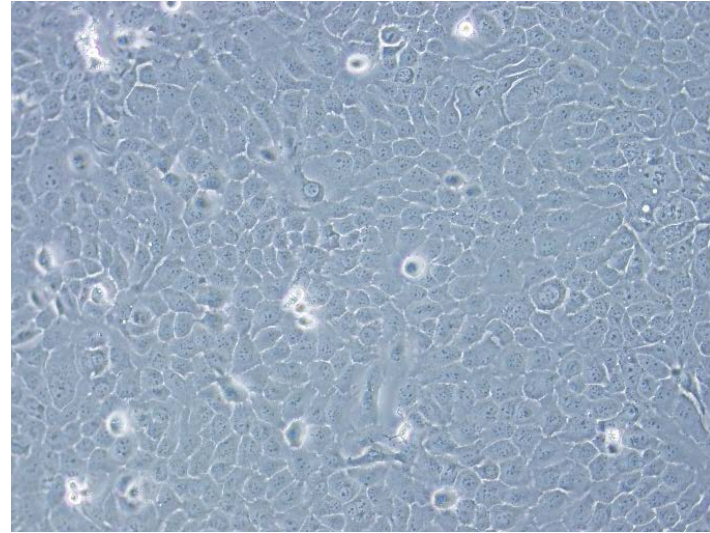
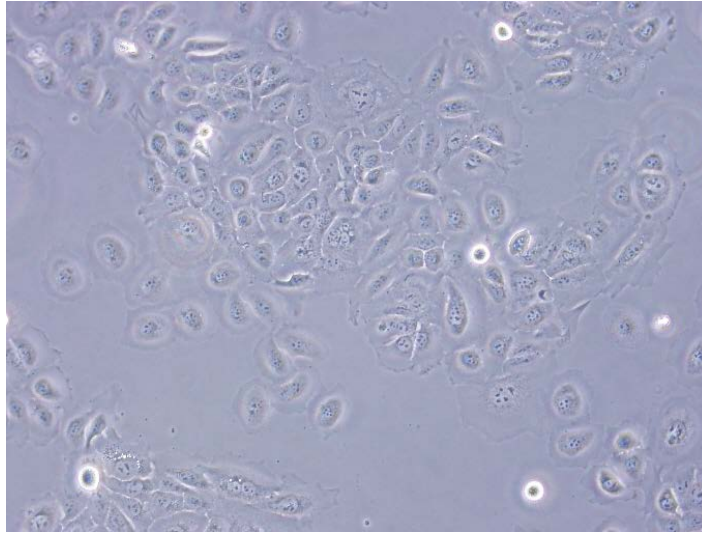
- Mouse muscle myoblast (C2C12) cells cultured on SPL Cell Culture Dishes (20100).
- Cells were maintained for 3 days (seeding density: 2×10^5 cells/dish) in 37°C humidified condition, in 10 ml of DMEM, supplemented with 10% FBS and 1% antibiotics.
- Cells were tested negative for bacteria and fungi.

For Research Use Only. Not intended for use in diagnostic or therapeutic procedures.

© SPL Life Sciences Co., Ltd.

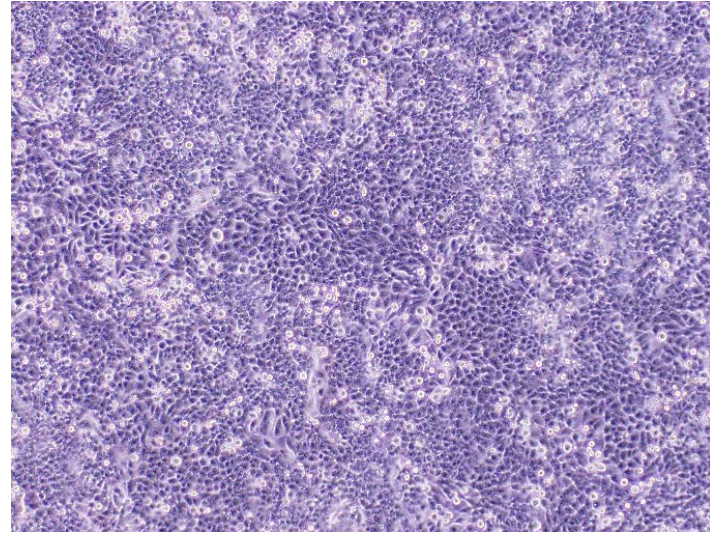
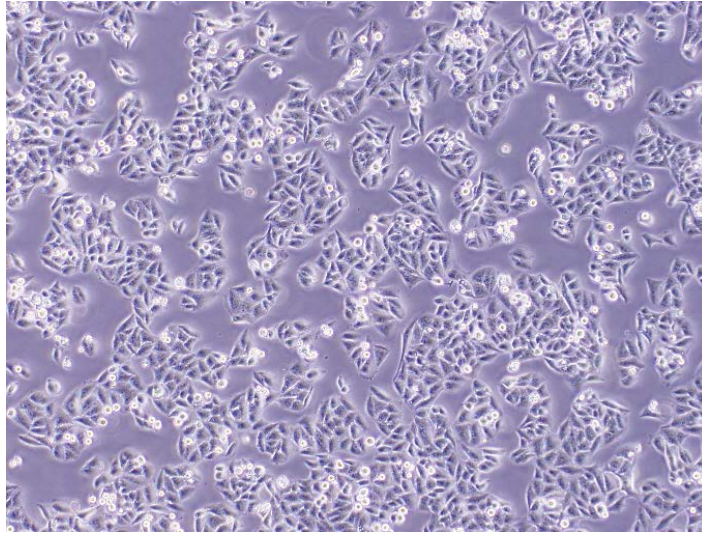


SPL Cell Culture Dish – HaCaT



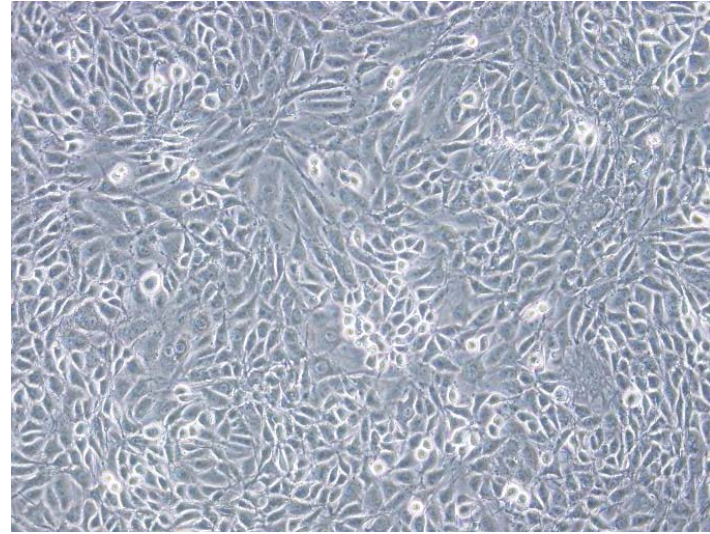
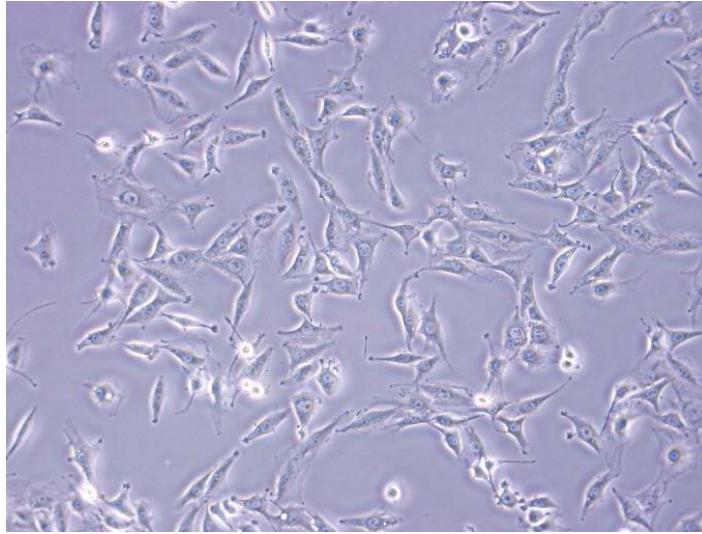
- Human skin keratinocyte (HaCaT) cells cultured on SPL Cell Culture Dishes (20100).
- Cells were maintained for 3 days (seeding density: 3×10^5 cells/dish) in 37°C humidified condition, in 10 ml of DMEM, supplemented with 10% FBS and 1% antibiotics.
- Cells were tested negative for microbials.

SPL Cell Culture Dish – HeLa



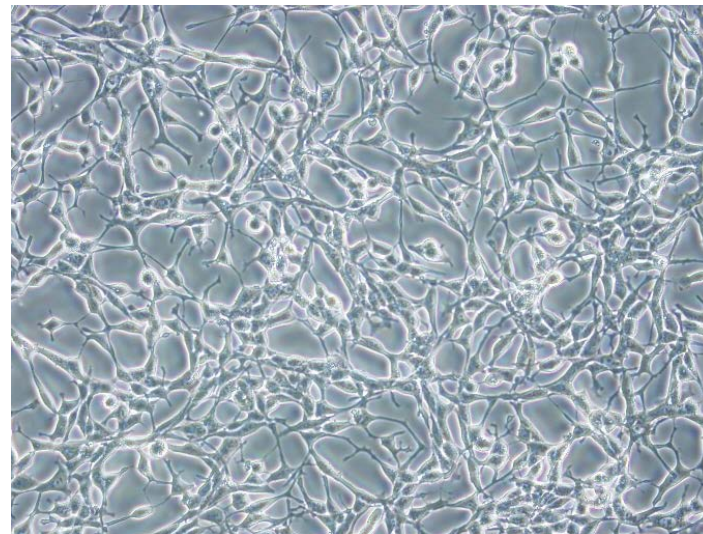
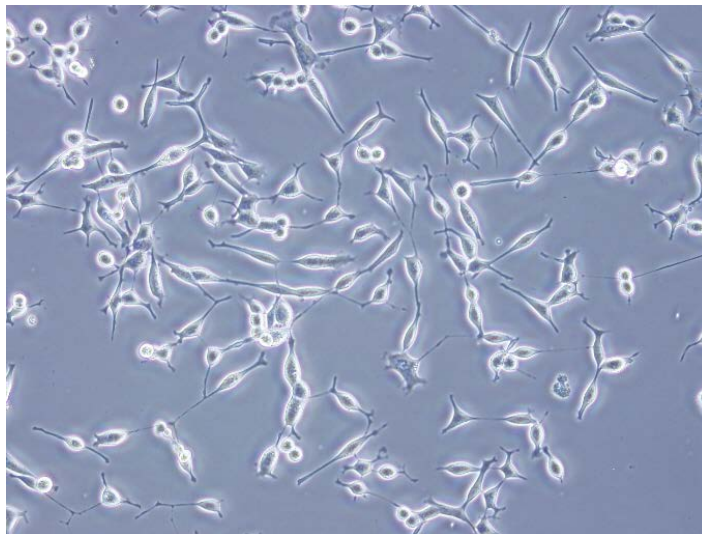
- Human cervix adenocarcinoma (HeLa) cultured on SPL Cell Culture Dishes (20100).
- Cells were maintained for 3 days (seeding density: 2×10^5 cells/dish) in 37°C humidified condition, in 10 ml of DMEM, supplemented with 10% FBS and 1% antibiotics.
- Cells were tested negative for bacteria and fungi.

SPL Cell Culture Dish – L6



- Rat skeletal muscle myoblast(L6) cells cultured on SPL Cell Culture Dishes (20100).
- Cells were maintained for 3 days (seeding density: 1×10^5 cells/dish) in 37°C humidified condition, in 10 ml of DMEM, supplemented with 10% FBS and 1% antibiotics.
- Cells were tested negative for microbials.

SPL Cell Culture Dish – LNCaP



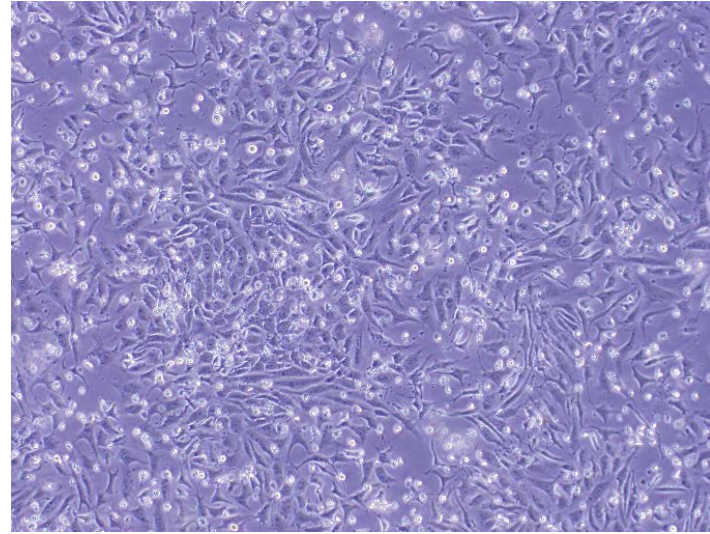
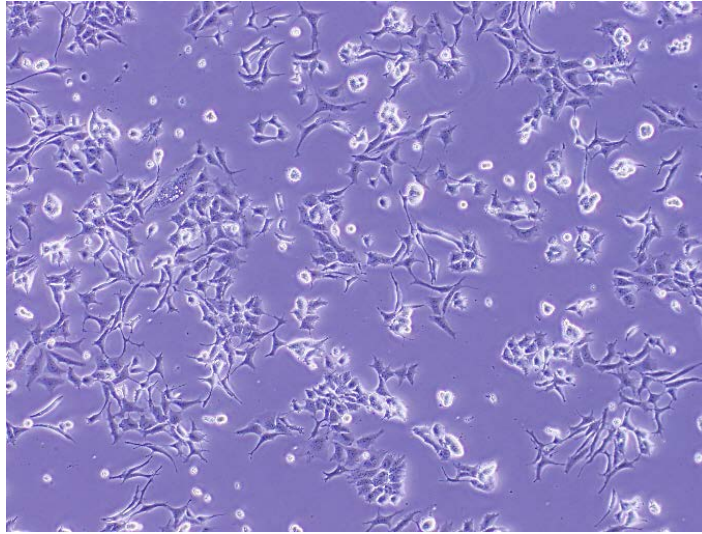
- Human prostate carcinoma (LNCaP) cells cultured on SPL Cell Culture Dishes (20100).
- Cells were maintained for 3 days (seeding density: 10×10^5 cells/dish) in 37°C humidified condition, in 10 ml of RPMI 1640, supplemented with 10% FBS and 1% antibiotics.
- Cells were tested negative for bacteria and fungi.

For Research Use Only. Not intended for use in diagnostic or therapeutic procedures.

© SPL Life Sciences Co., Ltd.

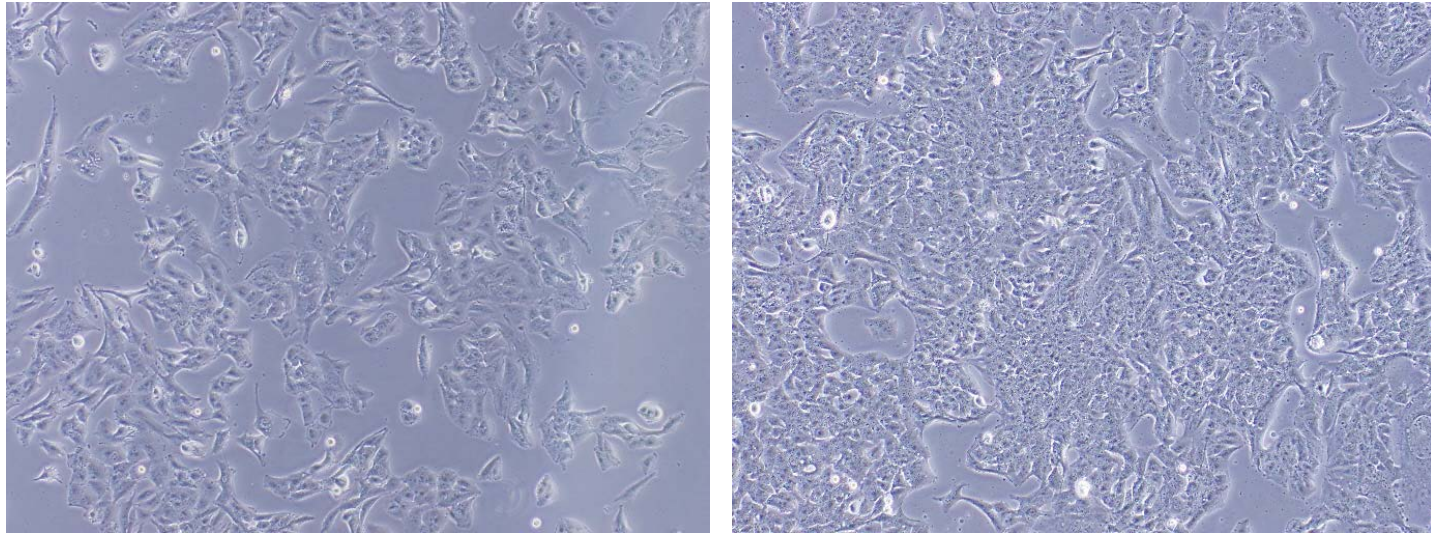


SPL Cell Culture Dish – SKNMC



- Human brain neuroepithelioma (SKNMC) cells cultured on SPL Cell Culture Dishes (20100).
- Cells were maintained for 3 days (seeding density: 5×10^5 cells/dish) in 37°C humidified condition, in 10 ml of DMEM, supplemented with 10% FBS and 1% antibiotics.
- Cells were tested negative for microbials.

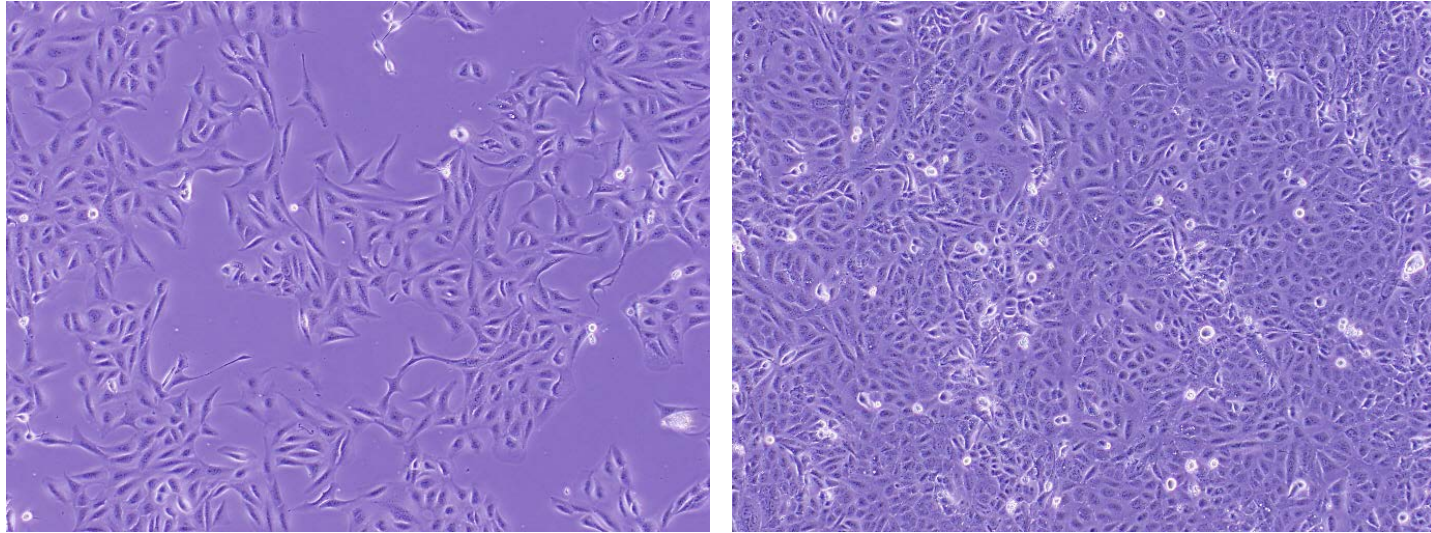
SPL Cell Culture Dish – T98G



- Human brain glioblastoma (T98G) cells cultured on SPL Cell Culture Dishes (20100).
- Cells were maintained for 3 days (seeding density: 3×10^5 cells/dish) in 37°C humidified condition, in 10 ml of RPMI 1640, supplemented with 10% FBS and 1% antibiotics.
- Cells were tested negative for microbials.

For Research Use Only. Not intended for use in diagnostic or therapeutic procedures.
© SPL Life Sciences Co., Ltd.

SPL Cell Culture Dish – 293A



- Human bone osteosarcoma (U2-OS) cells cultured on SPL Cell Culture Dishes (20100).
- Cells were maintained for 3 days (seeding density: 2×10^5 cells/dish) in 37°C humidified condition, in 10 ml of DMEM, supplemented with 10% FBS and 1% antibiotics.
- Cells were tested negative for bacteria and fungi.

For Research Use Only. Not intended for use in diagnostic or therapeutic procedures.
© SPL Life Sciences Co., Ltd.



SPL Cell Culture Dish – Embryonic cells after fertilization



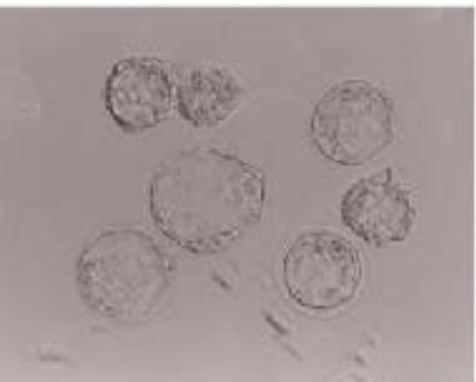
2 Cell Stage



4 Cell Stage



8 Cell Stage



Morula



Blastocyst



Hatching Blastocyst

For Research Use Only. Not intended for use in diagnostic or therapeutic procedures.
© SPL Life Sciences Co., Ltd.

