

Black & White Plate 96well (#30196/30296/30396/30496)

1. Description

Multiwell Plates have been widely used for handling different samples in single experiment during culture. SPL Life Sciences provides black and white cell culture plates 96-well plates for fluorescence and luminescence assays. Surface treated or non-treated versions of each color can be selected for each multiwell plate depending on the experiments.

2. Features

- ❖ HTS (High-Throughput Screening) compatible
- ❖ Designed to prevent cross contamination
- ❖ Effective gas exchange lid inner design
- ❖ Alphanumeric labeling
- ❖ Homogeneous cell culture
- ❖ Flat bottoms
- ❖ USP guideline compliant (USP class VI tested)
- ❖ ANSI guideline compliant

3. Functional Test

Sterility	:	Passed
Cytotoxicity	:	Passed
Non-Pyrogenic	:	Passed
RNase/DNase free	:	Passed
DNA free	:	Passed

4. Product Range

Cat. No.	Color	External Dimension w x l x h (mm)	Bottom Type	Well Dimension d x h (mm)	Growth Area (cm ²)	Working Volume (ml)	Surface Treatment	Sterile	Packaging
30196	White	85.40 x 127.60 x 14.40	Flat	6.50 x 10.80	0.30	0.20	+	+	1 / 50
30296	Black	85.40 x 127.60 x 14.40	Flat	6.50 x 10.80	0.30	0.20	+	+	1 / 50
30396	White	85.40 x 127.60 x 14.40	Flat	6.50 x 10.80	0.30	0.20	-	-	1 / 50
30496	Black	85.40 x 127.60 x 14.40	Flat	6.92 x 12.00	0.30	0.20	-	-	1 / 50

5. Certification

SPL Life Sciences hereby certifies that the product identified above, inspected to be in compliance with product quality specification and requirements as documented in our ISO 9001:2015 Quality Management System (K-QA-Q031478) in Korea.

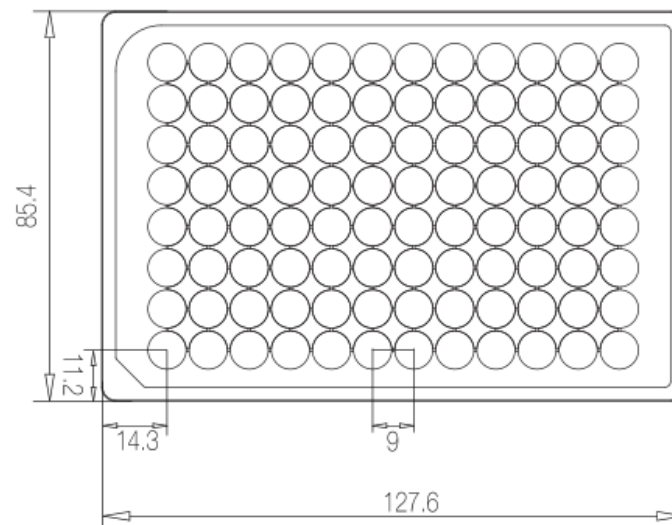
6. Specifications & Technical Drawing

- Specifications

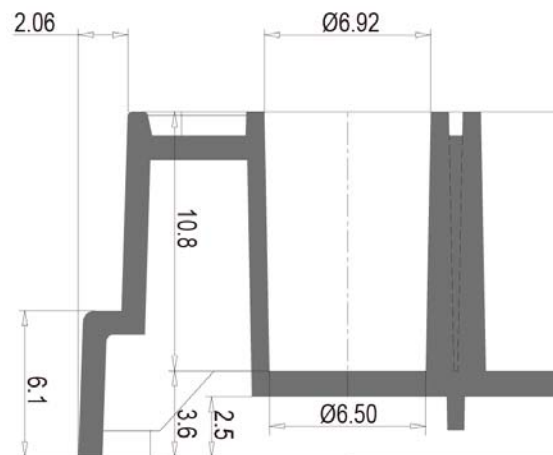
Dimensions		Material (Resin)	Packaging
Lid	Dish		
Length: 127.10 mm	Length: 127.60 mm	Crystal-grade polystyrene (PS)	<ul style="list-style-type: none"> • Pieces/Sleeve: 1 • Pieces/Case: 50
Width: 84.90 mm	Width: 85.40 mm		
Height: 10.00 mm	Height: 20.20 mm		
	Well Dimension: 6.30 mm		
Volume per Well: 0.20 ml			
Growth Area: 0.32 cm ²			

- Technical Drawing

Plate



Flat Bottom



www.spllifesciences.com

For technical assistance, contact SPL R&D Center at:

Tel: +82-31-533-4800; Fax: +82-31-533-1430; e-mail: spl@ispl.co.kr

To place an order, contact your local distributor or

Tel: +82-31-533-4800; Fax: +82-31-533-1430; e-mail: business@ispl.co.kr

SPL-TDS-B&WP

For Research Use Only. Not intended for use in diagnostic or therapeutic procedures.
© SPL Life Sciences Co., Ltd., Version 4, November 20th, 2018