

Cell Culture Plate 96well

(#30096/31096/32096/34096/34196/34296)

1. Description

Cell Culture Plates are widely used for handling multiple samples in a single experiment during culture. SPL Life Sciences provides a wide range of multiwell plates from 6well to 384well plates for cell culturing purposes.

2. Features

- ❖ HTS (High-Throughput Screening) compatible
- ❖ Designed to prevent cross contamination
- ❖ Effective gas exchange lid inner design
- ❖ Alphanumeric labeling
- ❖ Homogeneous cell culture
- ❖ 2 bottom types: Flat/Round
- ❖ USP guideline compliant (USP class VI tested)
- ❖ ANSI guideline compliant

3. Functional Test

Sterility	:	Passed
Cytotoxicity	:	Passed
Non-Pyrogenic	:	Passed
RNase/DNase free	:	Passed
DNA free	:	Passed

4. Product Range

Cat. No.	Material	External Dimension w x l x h (mm)	Bottom Type	Well Dimension d x h (mm)	Growth Area (cm ²)	Working Volume (ml)	Surface Treatment	Sterile	Packaging
30096	PS	85.40 x 127.60 x 14.40	Flat	6.92 x 10.80	0.33	0.20	+	+	1/50
31096	PS	85.40 x 127.60 x 14.40	Flat	6.92 x 10.80	0.33	0.20	-	-	10/100
32096	PS	85.40 x 127.60 x 14.40	Flat	6.92 x 10.80	0.33	0.20	-	+	1/50
34096	PS	85.40 x 127.60 x 14.40	Round	6.92 x 11.00	0.66	0.20	+	+	1/50
34196	PS	85.40 x 127.60 x 14.40	Round	6.92 x 11.00	0.66	0.20	-	-	10/100
34296	PS	85.40 x 127.60 x 14.40	Round	6.92 x 11.00	0.66	0.20	-	+	1/50

5. Certification

SPL Life Sciences hereby certifies that the product identified above, inspected to be in compliance with product quality specification and requirements as documented in our ISO 9001:2015 Quality Management System (K-QA-Q031478) in Korea.

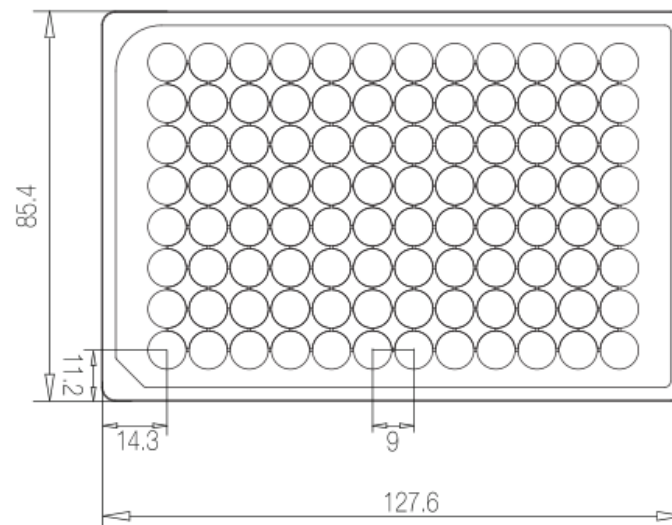
6. Specifications & Technical Drawing

- Specifications

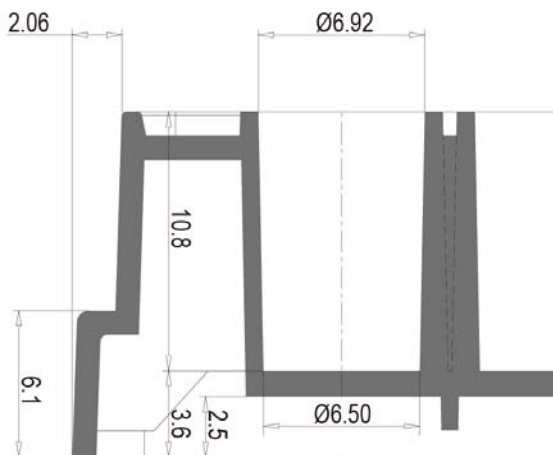
Dimensions		Material (Resin)	Packaging
Lid	Dish		
Length: 127.10 mm	Length: 127.60 mm	Crystal-grade polystyrene (PS)	<ul style="list-style-type: none"> ▪ Pieces/Sleeve: 1 ▪ Pieces/Case: 50
Width: 84.90 mm	Width: 85.40 mm		
Height: 10.00 mm	Height: 14.40 mm		
	Well Dimension: 6.50 mm		
Volume per Well: 0.20 ml			
Growth Area: 0.33 cm ²			

- Technical Drawing

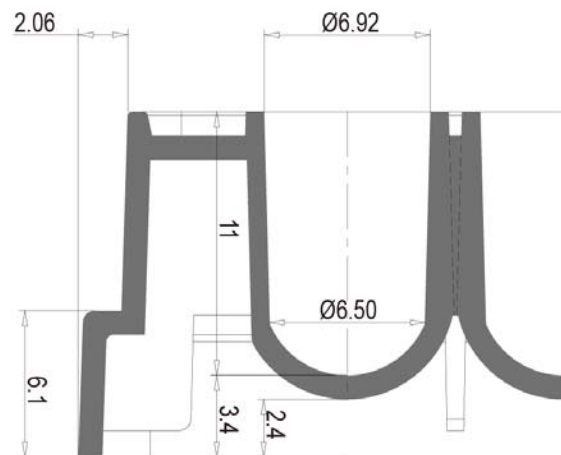
Plate



Flat Bottom



Round Bottom



www.spllifesciences.com

For technical assistance, contact SPL R&D Center at:

Tel: +82-31-533-4800; Fax: +82-31-533-1430; e-mail: spl@ispl.co.kr

To place an order, contact your local distributor or

Tel: +82-31-533-4800; Fax: +82-31-533-1430; e-mail: business@ispl.co.kr

SPL-TDS-CCP96

For Research Use Only. Not intended for use in diagnostic or therapeutic procedures.
© SPL Life Sciences Co., Ltd., Version 6, November 20th, 2018