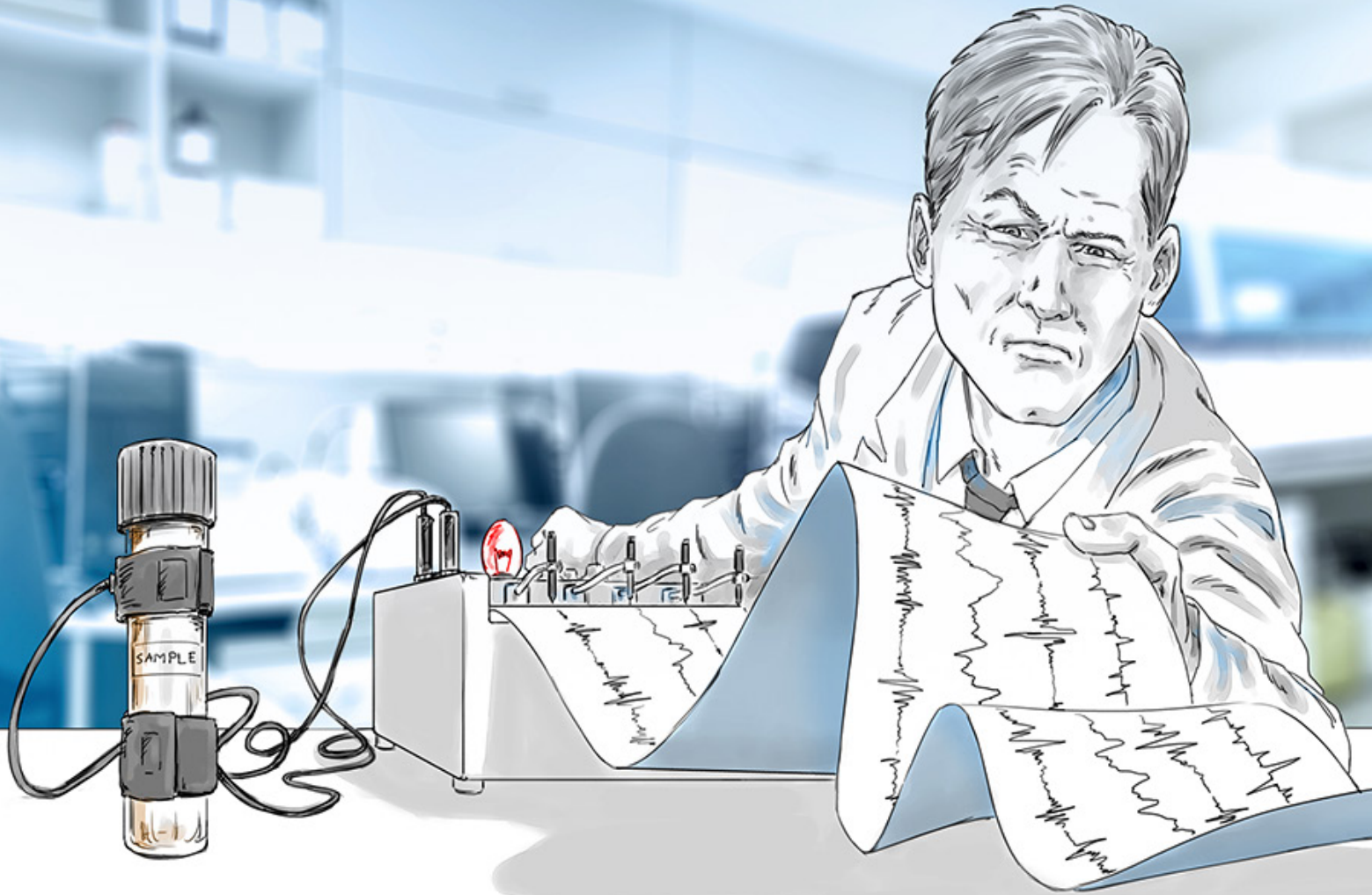




YOUR MASTER MIX MIGHT NOT BE TELLING THE WHOLE STORY.

Demand the truth. Demand EvoScript.

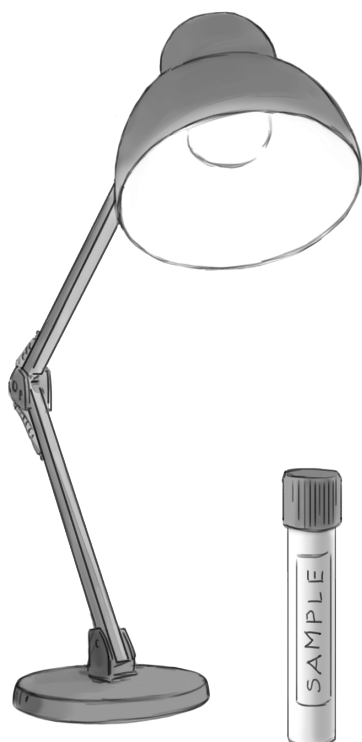


LightCycler® EvoScript RNA Masters
Datasheet

Witness the evolution of one-step RT-qPCR

Extracting reliable answers from RNA can be a challenge. When samples are poor and copy numbers are low, rely on the next generation of master mixes from the pioneer in PCR technology. Trust one-step EvoScript RNA Masters from Roche.

Designed for gene expression and pathogen detection applications on your LightCycler® System, EvoScript RNA Masters deliver unprecedented performance, unmatched ease-of-use and measurably better results when compared with the SuperScript® III Platinum One-Step kits.*



Superior performance*

- Highly sensitive detection, down to nearly one copy
- Detects rare transcripts for gene expression applications
- Broad dynamic range for superior quantification
- 5X master mix concentration for higher sensitivity, even with larger sample volumes

Superior data quality*

- Highly thermostable reverse transcriptase for consistent, stable results, including tolerance of targets of varying secondary structure
- Works on RNA targets isolated from a variety of sample materials
- UNG compatible for contamination control capabilities

Superior ease-of-use*

- Single-vial formulation for convenience, speed, and reduced errors
- Superior specificity for easier assay optimization
- Hot-start protocol and a single enzyme for reverse transcription and polymerase chain reaction, to obtain faster, more specific results

*Based on the results of head-to-head tests of the LightCycler® EvoScript RNA SYBR® Green I Master versus the SuperScript® III Platinum® SYBR® Green One-Step qRT-PCR Kit and the LightCycler® EvoScript RNA Probes Master versus SuperScript® III Platinum® One-Step qRT-PCR Kit. Tests were run with various sample materials using the optimal conditions specified in the instructions for use for all products.

Examine the evidence

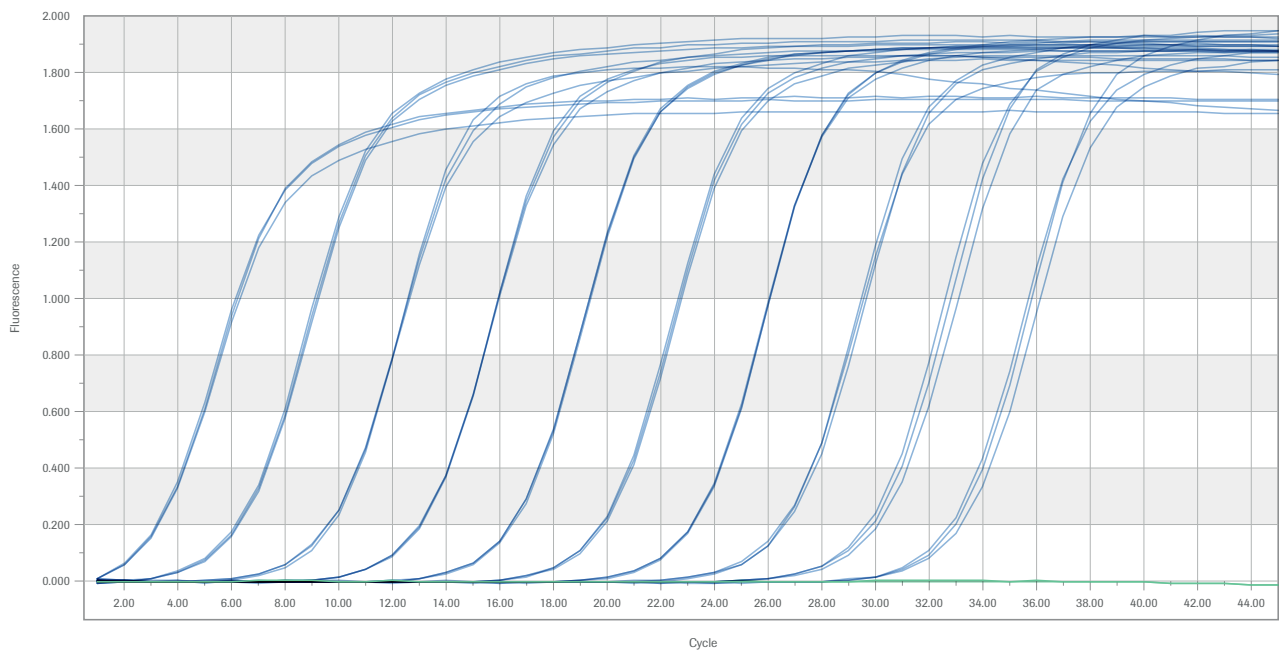
Whether for translational research or lab developed tests, LightCycler® EvoScript RNA Masters set the standard for RT-qPCR. Transcribing, amplifying and detecting faster and more efficiently than other leading mixes.

In head-to-head comparisons with SuperScript® III, LightCycler® EvoScript RNA Masters from Roche delivered measurably better sensitivity, specificity and performance.



LightCycler® EvoScript RNA SYBR® Green I Master

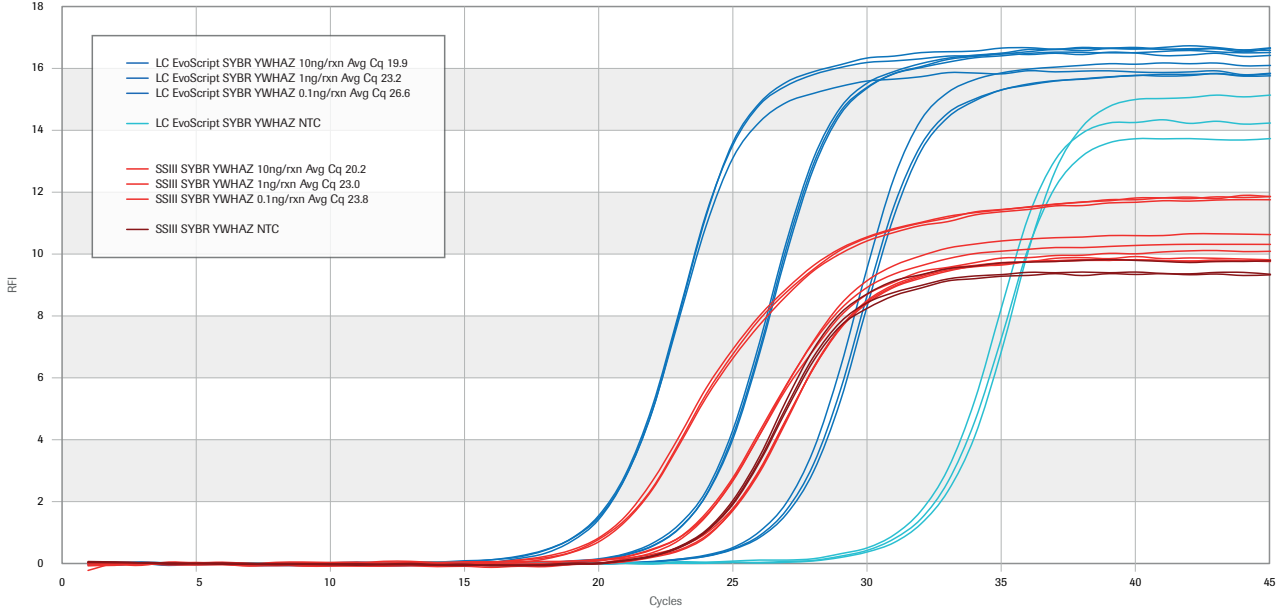
Performance Over a Dynamic Range



Ten-fold dilutions of HER3 Transcripts were amplified using the LightCycler® EvoScript RNA SYBR® Green I Master. The assay was run on a LightCycler® 96 instrument.

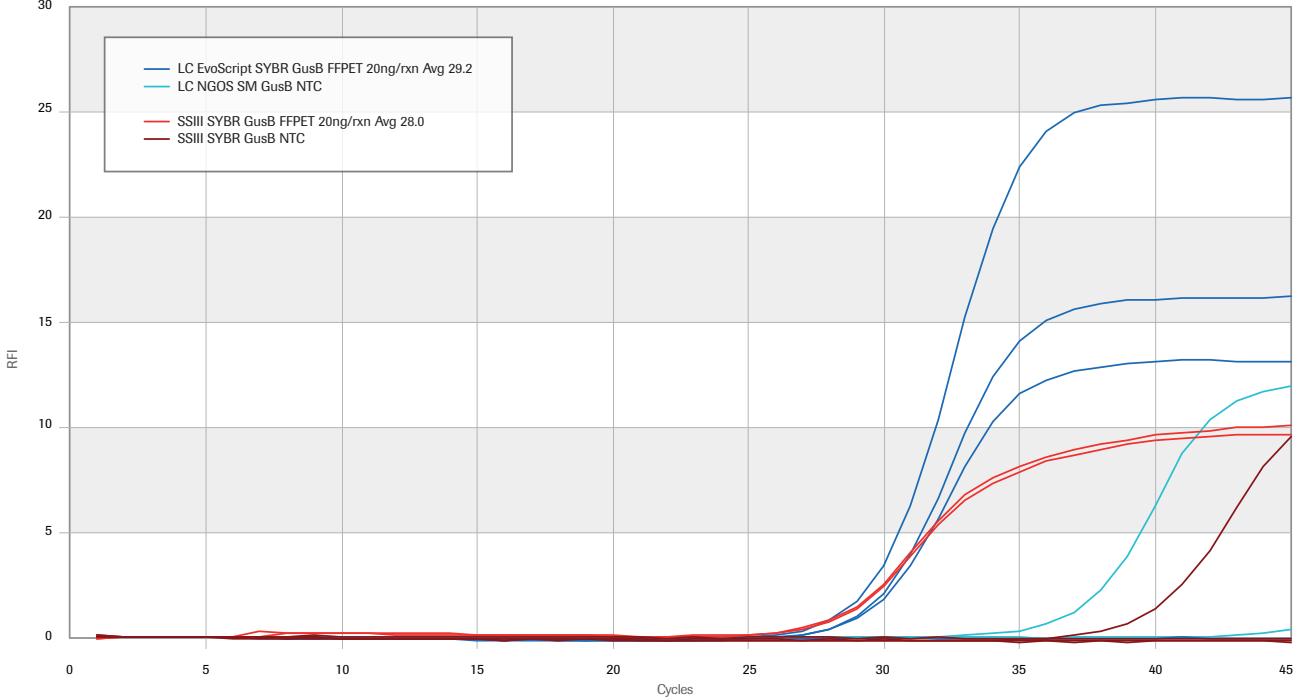
LightCycler® EvoScript RNA SYBR® Green I Master (continued)

Earlier Cq Values, Higher Florescence, Higher Percentage PCR Efficiency



LightCycler® EvoScript RNA SYBR® Green I Master (blue) and SuperScript® III Platinum® SYBR® Green One-Step qRT-PCR Kit (red) were used to amplify the YWHAZ gene at three concentrations (10ng/reaction, 1ng/reaction and 0.1ng/reaction). Reactions were performed on a LightCycler® 480 instrument.

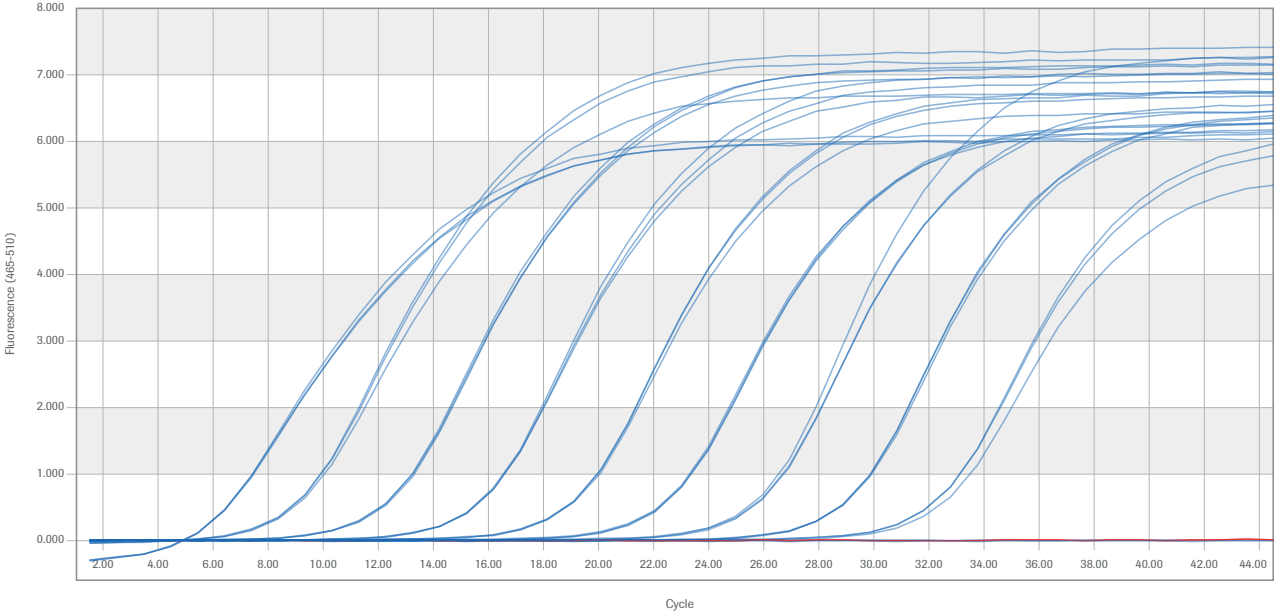
Compatible with FFPET Samples – Comparable with Other Mixes



LightCycler® EvoScript RNA SYBR® Green I Master (blue) and SuperScript® III Platinum® SYBR® Green One-Step qRT-PCR Kit (red) were used to amplify the GusB gene from Formalin-fixed Paraffin Embedded Tissue samples on a LightCycler® 480 instrument.

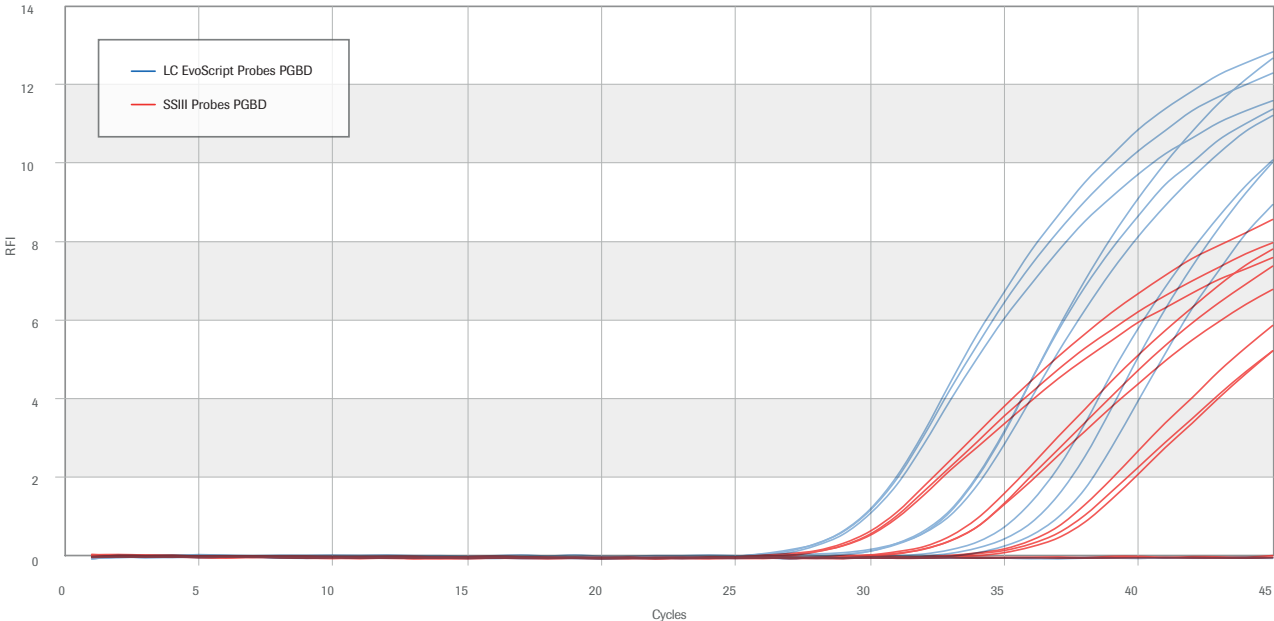
LightCycler® EvoScript RNA Probes Master

Performance Over a Dynamic Range



Ten-fold dilutions of HER3 Transcripts were amplified using the LightCycler® EvoScript RNA Probes Master. The assay was run on a LightCycler® 480 instrument.

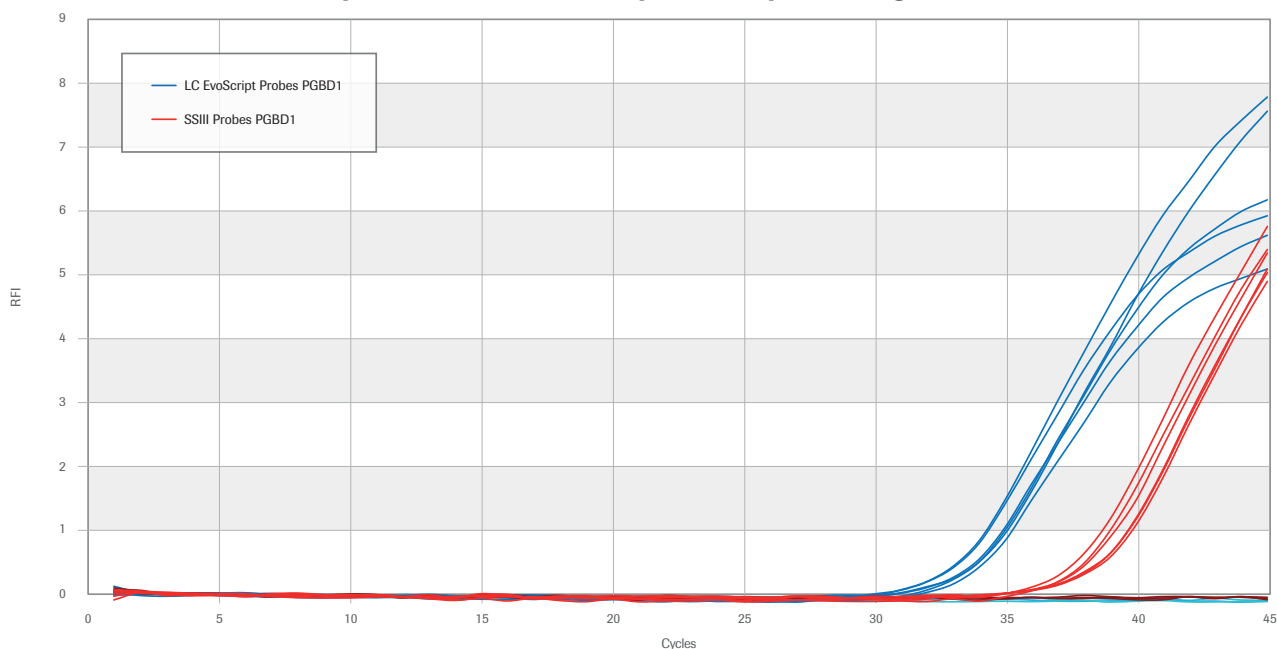
Earlier Cq Values, Higher Florescence, Higher Percentage PCR Efficiency



LightCycler® EvoScript RNA Probes Master (blue) and SuperScript® III Platinum® One-Step qRT-PCR Kit (red) were used to amplify the PGBD gene at three concentrations (10ng/reaction, 1ng/reaction and 0.1ng/reaction). Reactions were performed on a LightCycler® 480 instrument.

LightCycler® EvoScript RNA Probes Master (continued)

Compatible with FFPE Samples – Outperforming Other Mixes



LightCycler® EvoScript RNA Probes Master (blue) and SuperScript® III Platinum® One-Step qRT-PCR Kit (red) were used to amplify the PGBD1 gene from Formalin-fixed Paraffin Embedded Tissue samples on a LightCycler® 480 instrument.

The EvoScript formulation

Formulated to meet your gene expression and pathogen detection needs, LightCycler® EvoScript RNA Masters deliver outstanding performance for faster RNA workflows and more consistent results.

- Single-vial format
- 5X RT-qPCR Master Mix
- Novel reverse transcriptase enzyme + FastStart Taq DNA Polymerase Blend
- Mg²⁺ as co-factor
- Stable at room temperature for up to 4 hours

Order EvoScript RNA Masters

EvoScript RNA Masters from Roche are available in convenient order quantities for use on your LightCycler® System.

LightCycler® EvoScript RNA Probes Master
07 800 029 001 (200 reactions)

LightCycler® EvoScript RNA Probes Master
07 800 096 001 (1,000 reactions)

LightCycler® EvoScript RNA SYBR® Green I Master
07 800 134 001 (200 reactions)

LightCycler® EvoScript RNA SYBR® Green I Master
07 800 177 001 (1,000 reactions of 20)

