

μ-Slide 2 well | 4 well | 8 well

Imaging Chambers Combining Optimal Cell Culture and High-Resolution Microscopy

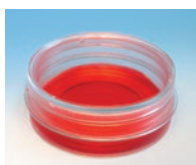


Live Cell Imaging Applications:

- Cell Cultivation and Microscopy
- Transfection
- Protein Localization
- High-Content Microscopy

- ✓ High-Resolution Microscopy Through a Coverslip-Like Bottom
- ✓ Excellent Cell Growth on Tissue Culture Treated Surface
- ✓ Proven Mechanical and Chemical Stability
- ✓ Broad Range of Sizes and Coatings

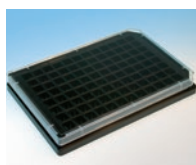
Complimentary equipment for high-resolution microscopy:



μ-Dish 35 mm, high



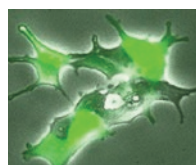
ibidi Heating System



Multi-Well Plates



LifeAct



Torpedo^{DNA}



μ-Slide VI 0.4

Live Cell Imaging

Cell Culture

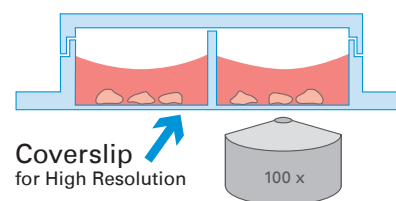
Immunofluorescence

μ-Slide 2 well | 4 well | 8 well

Combining Optimal Cell Culture and High-Resolution Microscopy

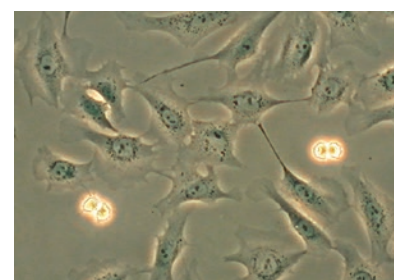
High-Resolution Microscopy Through a Coverslip-Like Bottom

The ibidi μ-Slide 2/4/8 well product family has been designed for high-end microscopic analysis of fixed or living cells. The high optical quality of the material is similar to that of glass, so you can perform all kinds of fluorescence experiments with uncompromised resolution and choice of wavelength.



Excellent Cell Growth on the ibiTreat Surface

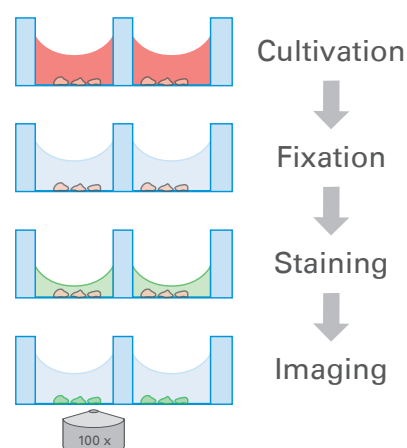
Cells can be cultivated and, subsequently, investigated with microscopical methods, directly in the μ-Slide. The special plastic material (ibidi Standard Bottom) that is used in the μ-Slides 2, 4, or 8 well provides coverslip-like optics for high-resolution microscopy. The ibiTreat cell culture surface allows excellent cell growth, as demonstrated in over 1,000 peer-reviewed publications.



Proven Mechanical and Chemical Stability

The μ-Slides 2, 4, or 8 well consist of a non-removable and bio-compatible plastic chamber that is securely mounted to a No. 1.5 coverslip (ibidi Standard Bottom). The high-quality production of the μ-Slide, without using glue, prevents the leakage of medium or cells. The μ-Slides are also chemically resistant to all fixation (e.g., methanol, acetone, paraformaldehyde, and acids).

ibidi μ-Slides 2, 4, or 8 well reduce the number of experimental steps needed in immunofluorescence assays.



Specifications:

	μ-Slide 2 well	μ-Slide 4 well	μ-Slide 8 well
Dimensions of wells in mm	w 21.2 x l 23.3 x h 9.3	w 21.2 x l 11.0 x h 9.3	w 9.4 x l 10.7 x h 6.8
Volume per well	1500 μl	700 μl	300 μl
Growth area per well	4.8 cm ²	2.2 cm ²	1.0 cm ²

Ordering Information:

Coating	μ-Slide 2 well	μ-Slide 4 well	μ-Slide 8 well
ibiTreat, tissue culture treated	80286	80426	80826
Collagen IV	80282	80422	80822
Fibronectin	80283	80423	80823
Poly-L-Lysine	80284	80424	80824
Poly-D-Lysine	80285	80425	80825
hydrophobic, uncoated	80281	80421	80821

FREE SAMPLES: www.ibidi.com/free-samples