

Extracting HMW DNA using the Nanobind® HT 1 mL blood kit for mammalian whole blood on the KingFisher Apex system



Procedure & checklist

This procedure describes the workflow for high-throughput automated extraction of HMW (50–300 kb) DNA from 1 mL of whole mammalian blood using the Thermo Fisher KingFisher Apex robotic instrument. This procedure requires the Nanobind HT 1 mL blood kit (102-762-800) and is recommended for HiFi sequencing.

The Nanobind HT 1 mL blood kit has enough reagents for 96 extractions to be run in 4 runs x 24 samples. We do not recommend running fewer than 24 samples per run as the kit is designed to accommodate dead volumes for a maximum of 4 runs (4 runs x 24 samples).

Required materials and equipment

Equipment/reagent	Manufacturer (part number)
Nanobind HT 1 mL blood kit	PacBio® (102-762-800)
KingFisher Apex System	Thermo Fisher Scientific (5400940, includes Apex 24 Combi magnet head)
KingFisher Apex 24 Combi magnet head	Thermo Fisher Scientific (24079940)
KingFisher Apex 24 deep-well heating block	Thermo Fisher Scientific (24075940)
KingFisher 24 deep-well plates, barcoded	Thermo Fisher Scientific (95040470B)
KingFisher Apex 24 deep-well tip comb & plates, barcoded	Thermo Fisher Scientific (97002610B)
Ethanol (96–100%)	Any major lab supplier (MLS)
Isopropanol (100%)	Any MLS
UV/Vis	Thermo Fisher Scientific NanoDrop 2000
Fluorescent DNA Quantification	Thermo Qubit 3.0, dsDNA BR and RNA BR Assay Kits

Before you begin

Prior to starting

Buffer CW1 and CW2 are supplied as concentrates. This kit uses CW1 with a 60% final ethanol concentration and CW2 with a 60% final ethanol concentration. Before using, add the appropriate amount of ethanol (96–100%) to Buffer CW1 and Buffer CW2 as indicated on the bottles.

Kit storage

RNase A should be stored at 4°C upon arrival.

Nanobind disks and all other buffers should be stored at room temperature (15–30°C).

Safety precautions

Buffer BL3 and Buffer CW1 contain guanidine hydrochloride. Warning! Guanidine hydrochloride is harmful if swallowed or inhaled and causes skin and eye irritation. DO NOT mix with bleach or acidic solutions.

Product use

Nanobind kits are intended for research use only.

Headspace

The automation script for the following procedure includes “headspace” volume in each plate. The “headspace” volumes are virtual volumes added to the automation script to improve the retention of the Nanobind on the magnetic rod and do not interfere with the extraction efficiency or performance.

Procedure and checklist

Automated HMW (50–300 kb) DNA extraction procedure

Input requirements

Amount: 1 mL of mammalian whole blood

- The yield for human whole blood will vary from 3–70 µg based on donor white blood cell concentration.
- Blood samples should be frozen as quickly as possible after being drawn.
- Storage at 4°C should be limited to 2 days or fewer to prevent sample degradation and reduced DNA recovery.
- Blood samples should be aliquoted to avoid repeated freeze-thaws.
- K2 EDTA is the recommended anticoagulant. Samples stored in sodium heparin (NaHep) and citrate (NaCit) also performed well in limited testing.
- No systematic difference has been observed in DNA QC or sequencing results between fresh and frozen blood samples.

Prior to beginning protocol

- If using frozen blood, incubate in a water bath or dry block heater at 37°C for 15 minutes to thoroughly thaw the sample. Mix the sample by inverting the tube 15–20 times immediately prior to use. **Improperly thawed and mixed samples may result in inconsistent DNA yield and purity.**
- Ensure the proper script has been installed on the KingFisher instrument (see [Nanobind HT kit Guide & overview “Programs”](#)).

HMW DNA extraction – mammalian whole blood (1 mL)

This procedure describes the procedure for automated HMW DNA extraction from 1 mL of mammalian whole blood on the Thermo Fisher KingFisher Apex instrument. This protocol uses the KingFisher 24 Combi magnetic head, 24 deep-well plates, and 24 deep-well tip comb. This procedure cannot be run with the 96 deep-well head and 96 deep-well plates.

This procedure is not intended for use with the Thermo Fisher KingFisher Apex 24 Combi tip comb. Use the 24 deep-well tip comb with the 24 Combi magnetic head. Failure to do so will result in subpar performance, including reduced recovery, reduced purity, and increased rate of hard failures (e.g., lost or dropped disks).

✓ Step	Instructions																																
1.1	Collect 7 KingFisher Apex 24 deep-well plates and prepare as indicated in the following table. Add the components to Plate 1 (Lysis/Binding) only after all other plates have been prepared.																																
	<table border="1"> <thead> <tr> <th>Plate Number</th> <th>Plate Name</th> <th>Reagent</th> <th>Volume per well</th> </tr> </thead> <tbody> <tr> <td>1</td> <td>Lysis/Binding</td> <td>Sample + reagents from Step 1.2</td> <td></td> </tr> <tr> <td>2</td> <td>Nanobind Storage Plate</td> <td>One 5 mm Nanobind disk per well*</td> <td></td> </tr> <tr> <td>3</td> <td>Wash Plate 1</td> <td>Buffer CW1</td> <td>2 mL</td> </tr> <tr> <td>4</td> <td>Wash Plate 2</td> <td>Buffer CW2</td> <td>2 mL</td> </tr> <tr> <td>5</td> <td>Wash Plate 3</td> <td>Buffer CW2</td> <td>2 mL</td> </tr> <tr> <td>6</td> <td>Elution Plate</td> <td>Buffer EB</td> <td>200 µL</td> </tr> <tr> <td>7</td> <td>Tip Plate</td> <td>KingFisher Apex 24 deep-well tip comb</td> <td></td> </tr> </tbody> </table>	Plate Number	Plate Name	Reagent	Volume per well	1	Lysis/Binding	Sample + reagents from Step 1.2		2	Nanobind Storage Plate	One 5 mm Nanobind disk per well*		3	Wash Plate 1	Buffer CW1	2 mL	4	Wash Plate 2	Buffer CW2	2 mL	5	Wash Plate 3	Buffer CW2	2 mL	6	Elution Plate	Buffer EB	200 µL	7	Tip Plate	KingFisher Apex 24 deep-well tip comb	
	Plate Number	Plate Name	Reagent	Volume per well																													
	1	Lysis/Binding	Sample + reagents from Step 1.2																														
	2	Nanobind Storage Plate	One 5 mm Nanobind disk per well*																														
	3	Wash Plate 1	Buffer CW1	2 mL																													
	4	Wash Plate 2	Buffer CW2	2 mL																													
	5	Wash Plate 3	Buffer CW2	2 mL																													
6	Elution Plate	Buffer EB	200 µL																														
7	Tip Plate	KingFisher Apex 24 deep-well tip comb																															
*Nanobind disks do not need to be perfectly centered in the wells, but ensure they are at the bottom of the wells and not stuck to the side walls.																																	
1.2	Prepare sample in the Lysis/Binding Plate: <ul style="list-style-type: none"> • Add 100 µL of Proteinase K to each well. • Add 1 mL of whole blood to each well. • Thaw frozen whole blood at 37°C using a water bath or dry block heater for 15 minutes. Invert mix 15–20 times to thoroughly mix immediately prior to use. 																																
	<ul style="list-style-type: none"> • Add 100 µL of RNase A to each well. • Add 750 µL of Buffer BL3 to each well. <p>Note: add BL3 gently against the side of the well into the Lysis/Binding solution. Adding BL3 directly to the Lysis/Binding solution may affect extraction performance.</p> <p>Note: the sample and reagents MUST be added to the wells in the order described above.</p>																																
1.3	Ensure the instrument is set up with the 24 Combi magnetic head and the 24 deep-well heating block.																																

- 1.4 Insert the KingFisher Apex 24 deep-well tip comb into a KingFisher Apex 24 deep-well plate (Plate 7, Tip Plate).
- 1.5 Select the **1mL_Blood_Nanobind_HT_APEX** script (102-998-100) on the KingFisher Apex instrument.
- 1.6 Insert plates into the KingFisher Apex instrument as indicated on the display and press 'Next' after every plate to confirm position.
- 1.7 The protocol will start when the final plate is loaded and the 'Next' button is pressed.
- 1.8 When prompted by the instrument (~50 minutes after start), remove the Lysis/Binding plate (Plate 1) from the instrument and add 1.5 mL of isopropanol (750 μ L x 2) to each well. Re-insert the plate and press 'Next' to resume the protocol.
- 1.9 **Note: add isopropanol gently against the side of the well into the Lysis/Binding solution. Adding isopropanol directly to the Lysis/Binding solution may affect extraction purity.**
- Transfer eluates from the Elution Plate (Plate 6) to a new storage plate or storage tubes.
- 1.10
- The protocol is designed to leave the Nanobind disks in the Elution Plate. On occasion, the disk may be transferred back to the tip comb storage plate (Plate 7) after elution. This does not affect extraction performance.
 - When transferring eluate, a small amount of liquid may remain on the Nanobind disk. Use a P200 pipette tip to transfer any liquid remaining on the Nanobind disk.
- 1.11 Pipette-mix the sample 10 times with a standard P200 pipette to homogenize and disrupt any insolubilized "jellies" that may be present.
- Take care to disrupt any regions that feel more viscous than other regions.
 - Limited pipette mixing will not noticeably reduce DNA size or sequencing read lengths, but is important for accurate quantitation and consistent sequencing performance.
- 1.12 Let eluate rest overnight at RT to allow DNA to solubilize.
- Visible "jellies" should disperse after resting.
- 1.13 Following overnight rest, pipette-mix 10 times with a standard P200 pipette and analyze the recovery and purity as described in the [QC procedure](#) section

QC procedure

It is recommended that QC is performed after the DNA has been allowed to rest at room temperature overnight and appears homogeneous under visual examination and when pipetting.

1. Perform a NanoDrop UV/VIS measurement to determine total nucleic acid concentration and purity (A260/A280, A260/A230).
 - If the DNA is very heterogeneous or contains large amounts of unsolubilized “jellies”, refer to the [Nanobind HT kit Guide & overview “Heterogeneity and viscosity”](#) section for more information.
2. Perform a Qubit dsDNA BR assay measurement to determine DNA concentration.
 - We recommend the Qubit 3.0 (Thermo Fisher Scientific) with the dsDNA BR assay kit. We do not recommend the dsDNA HS assay kit as we have found the concentration measurements to be inconsistent.
3. Perform a Qubit RNA BR assay measurement to determine RNA concentration (optional).
 - We recommend the Qubit 3.0 (Thermo Fisher Scientific) with the RNA BR assay kit.
4. Use Agilent Femto Pulse for HMW DNA size QC.
 - We recommend diluting the sample to 250 pg/μL. Finger tap to mix.
 - Avoid mixing with a standard pipette. This will shear the DNA. Always use a wide-bore pipette when making dilutions.
 - Use the Genomic DNA 165 kb Kit (Agilent Technologies) for unsheared gDNA.

Storage of DNA

DNA can be stored in Buffer EB at 4°C for several months. Long term storage at -20°C or -80°C can be used if necessary. Avoid freeze/thaw cycles since this can degrade high molecular weight DNA.

Results

See the example results table and Figure 1 reflecting typical parameters as listed below.

- DNA extracted from 1 mL human whole blood will yield ~3–70 µg depending on donor white blood cell (WBC) count.
- 260/280 ratios should consistently be 1.8–2.0.
- 260/230 ratio can vary from 1.3–2.2.
- Samples with UV purities within the expected range should sequence well. UV purities outside of these ranges may indicate abnormalities in the extraction process.
- The mode of extracted human whole blood DNA measured on the Femto Pulse system (Agilent Technologies) is typically 100 kb+.

Sample	WBC count (10 ⁹ cells/L)	260/280	260/230	Nanodrop (ng/µL)	Qubit DNA yield (µg)
Donor #1	4.6	1.90	2.18	116.4	20.8
Donor #2	6.3	1.89	2.15	191.8	32.8
Donor #3	9.6	1.91	2.07	287.8	48.6

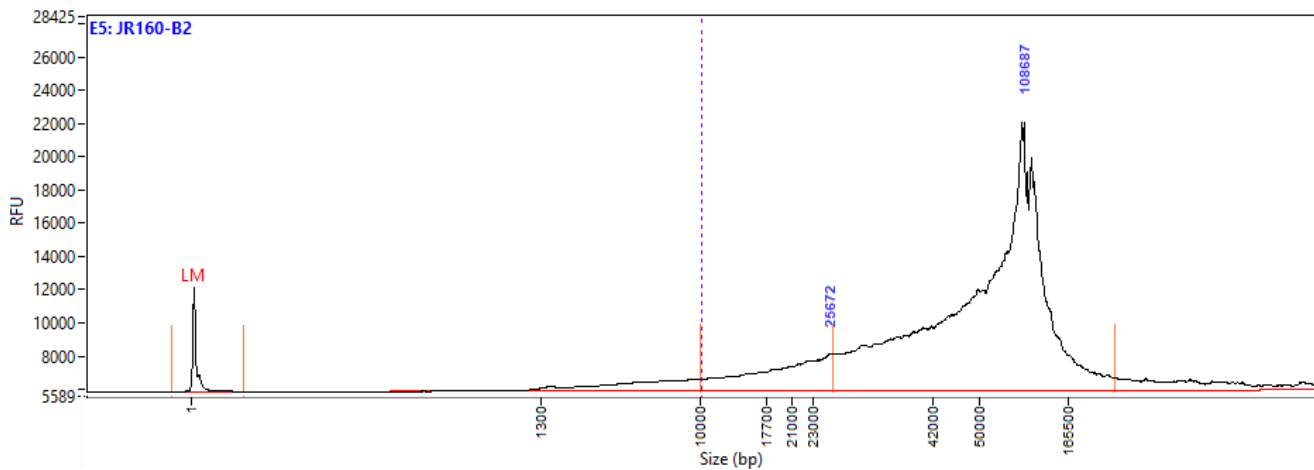


Figure 1. DNA size distribution of unsheared gDNA isolated from a 1 mL human whole blood sample using the KingFisher Apex on the Femto Pulse system (Agilent Technologies).

Troubleshooting FAQ

1. What do I do if the DNA is heterogenous and/or contains visible insoluble “jellies”?

- HMW DNA is inherently difficult to work with. The longer the DNA, the more heterogeneous it will be.
- Homogeneity can be improved by mixing 5–10 times with a standard P200 pipette. Take care to disrupt any particularly viscous regions. Overnight incubation at room temperature will then allow the HMW DNA to relax back into solution.

2. I transferred the eluate, but there is still liquid or a gel-like material on the Nanobind disk. What do I do?

- Ensure all the DNA is recovered from the sample by visually inspecting the Nanobind disk after the eluate has been transferred. The Nanobind disk should appear mostly free of any substances. If any material remains on the Nanobind after elution, remove as much as possible using a P200 pipette. Leaving a small amount of DNA/liquid on the Nanobind disk should not have a large impact of DNA yield.
- A second elution is not recommended. This is usually unnecessary and will result in a diluted, less-concentrated DNA sample.

3. Why is my DNA yield lower than expected?

- Ensure all the DNA was recovered from the Nanobind disk. See FAQ #2 for more information.
- DNA yield can be affected by improper thawing and/or mixing of the blood immediately prior to beginning the KingFisher Apex protocol. Refer to the recommendations in the [Prior to beginning protocol](#) section to properly prepare the sample.
- If the sample is heterogeneous, you may be sampling from an area of the eluate that is less concentrated. Take measurements from the top, middle, and bottom of the eluate to get an average concentration.
- Occasionally, samples can yield lower DNA recoveries than expected. This is typically due to factors beyond the control of the protocol, such as inherent sample inhomogeneity from certain donors or low donor white blood cell count. If the DNA yield is insufficient for sequencing and additional blood sample remains, rerun the protocol and contact PacBio for further steps.

4. Why are the purities lower than expected? Is this a problem?

- A correlation has NOT been seen between UV purity and sequencing performance and no particular attention to the UV purity is needed if it is within the expected range for that particular sample type. Generally, human whole blood DNA results in UV purities of 260/230 >1.3 and 260/280 >1.8. Samples with UV purity slightly outside of this range will likely still sequence well. Samples with UV purity far outside this range should be treated with caution.
- DNA purity can be affected by improper thawing and/or mixing of the blood immediately prior to beginning the KingFisher Apex procedure. Refer to the recommendations in the [Prior to beginning protocol](#) section to properly prepare the sample.
- If purities are generally low across all samples, ensure the isopropanol was added as recommended in Step 1.8 (add isopropanol so it gently trickles down the side of the well into the Lysis/Binding solution). Adding isopropanol directly to the Lysis/Binding solution can result in decreased purities.

5. One or more of my eluates do not contain a Nanobind disk after completion of the protocol. What does this mean?

- The Nanobind disks occasionally remain on the tip comb after elution and are returned to Plate 7 (Tip Plate) at the end of the protocol. If the Nanobind corresponding to the sample in question has been returned to Plate 7, move forward with sample QC as this should not have significant effects on DNA recovery.
- If a Nanobind disk for the eluate in question is not on the tip comb in Plate 7 (Tip Plate), this sample will likely not contain any DNA. Occasionally, the disk can become dislodged from the magnet during binding and remains in the Lysis/Binding plate (Plate 1). This is a rare occurrence but can happen. We recommend rerunning the protocol if additional blood sample remains.
- If the Nanobind disk for the eluate in question is not on the tip comb in Plate 7 and not in the Lysis/Binding plate (Plate 1), contact PacBio for further instruction.

6. One or more of my eluates exhibit a slight red/orange tint. What does this mean?

- Occasionally some of the blood coloration carries through the extraction. This can result in a slight decrease in 260/230 purity; however it should not affect DNA yield or sequencing performance.

7. Why isn't the protocol running and/or why is there an error message?

- Check to ensure the correct script is installed. See [Nanobind HT kit Guide & overview "Programs."](#)
- Check to ensure the correct magnet head and heat block are installed. The instrument will give an error message if the correct magnet head for a given protocol is not installed.
- Check to ensure all consumables are in the correct positions. The instrument will give an error message if it does not detect the tip comb (i.e., the tip comb is not in the correct position).
- The KingFisher Apex instrument uses barcoded 24 deep-well sample plates (Thermo Fisher Scientific 95040470B). The instrument will give an error message if it does not detect a barcode. Hitting "OK" will allow the script to continue (it will still work with the non-barcoded version of the plate). If an incorrect plate or tip comb barcode is detected the instrument will display an error message (for example, if a 24 deep-well plate was inserted instead of a 96 deep-well plate).
- For other on instrument error messages, please contact Thermo Fisher.

Revision history (description)	Version	Date
Initial release	01	April 2023

Research use only. Not for use in diagnostic procedures. © 2023 Pacific Biosciences of California, Inc. ("PacBio"). All rights reserved. Information in this document is subject to change without notice. PacBio assumes no responsibility for any errors or omissions in this document. Certain notices, terms, conditions and/or use restrictions may pertain to your use of PacBio products and/or third-party products. Refer to the applicable PacBio terms and conditions of sale and to the applicable license terms at pacb.com/license. Pacific Biosciences, the PacBio logo, PacBio, Circulomics, Omniome, SMRT, SMRTbell, Iso-Seq, Sequel, Nanobind, SBB, Revio, and Onso are trademarks of PacBio.